



materials

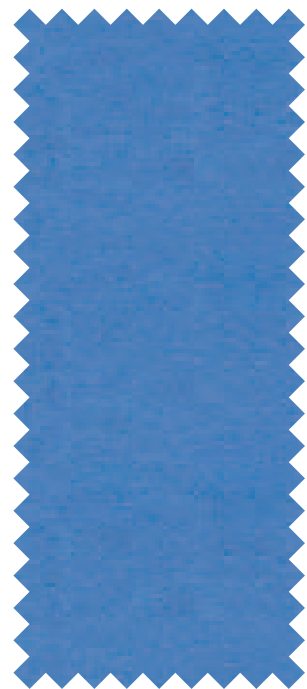
fashion



995



994



777

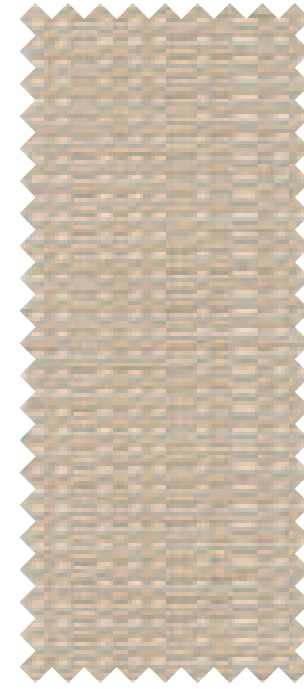


776

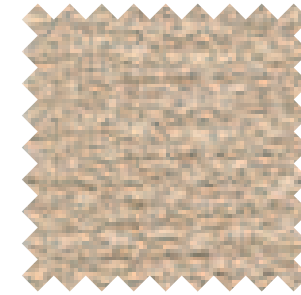


990

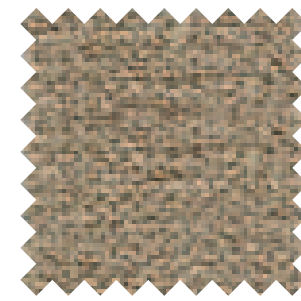
decoration



20A



63A



63B



494



61D



61A



495

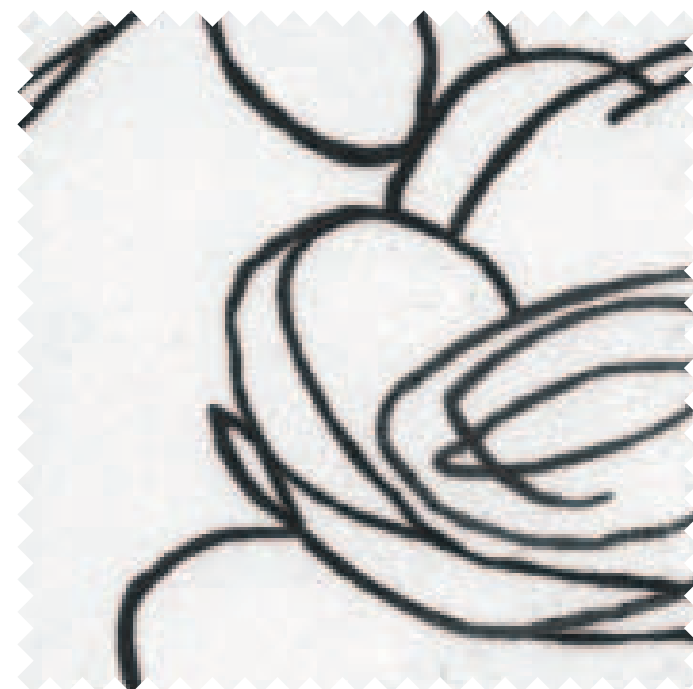
decoration



689



471



472

classic



69C



48A



69N



69B

fabric group 2 lario by Grites



lario 39    lario 01    lario 02    lario 97    lario 04



lario 03    lario 06    lario 96    lario 09    lario 11



lario 07    lario 60    lario 18    lario 16    lario 10

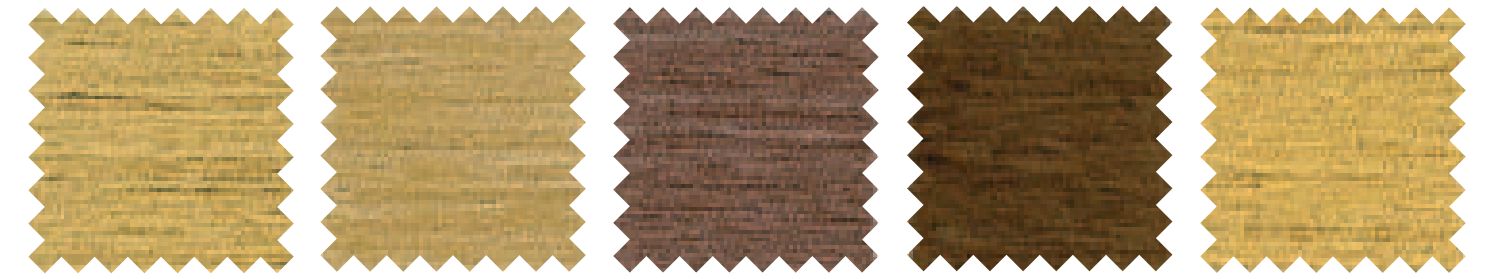


lario 59    lario 24    lario 15    lario 20    lario 66



lario 72    lario 70    lario 65    lario 61

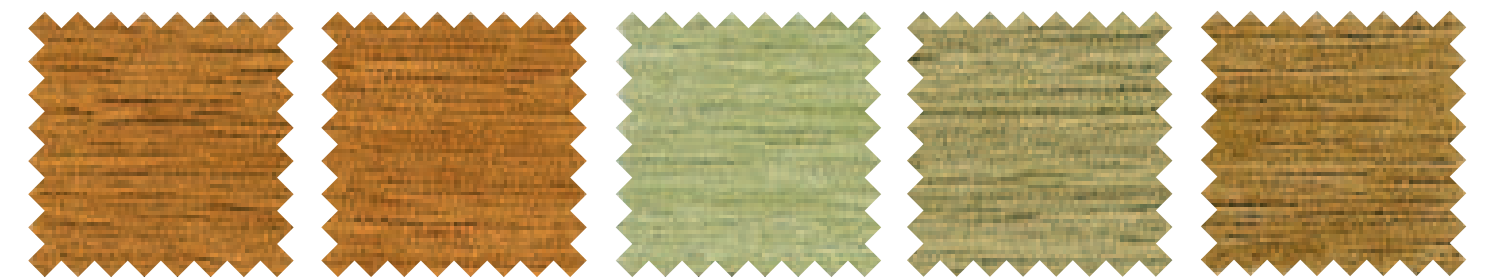
fabric group 2 lario by Grites



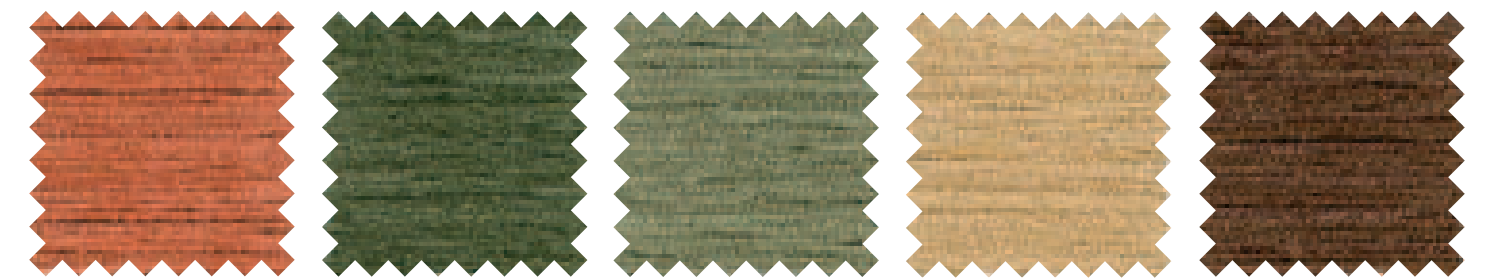
lario 94    lario 14    lario 31    lario 30    lario 95



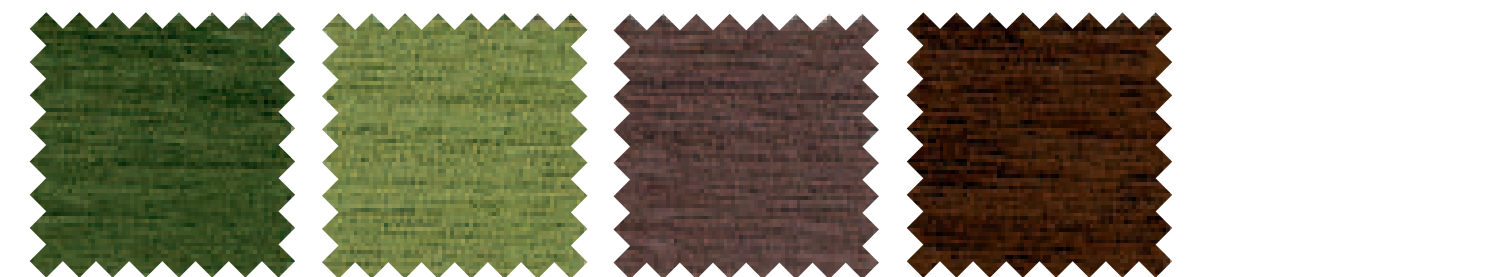
lario 93    lario 99    lario 100    lario 58    lario 92



lario 103    lario 104    lario 57    lario 98    lario 105

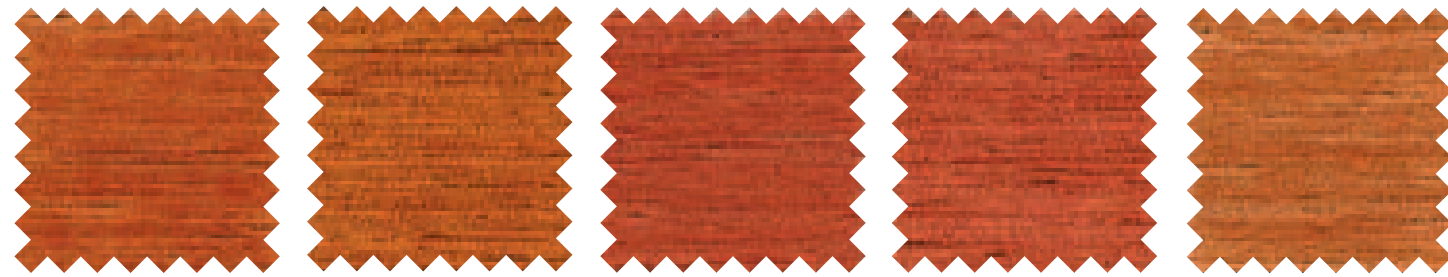


lario 113    lario 69    lario 68    lario 101    lario 29

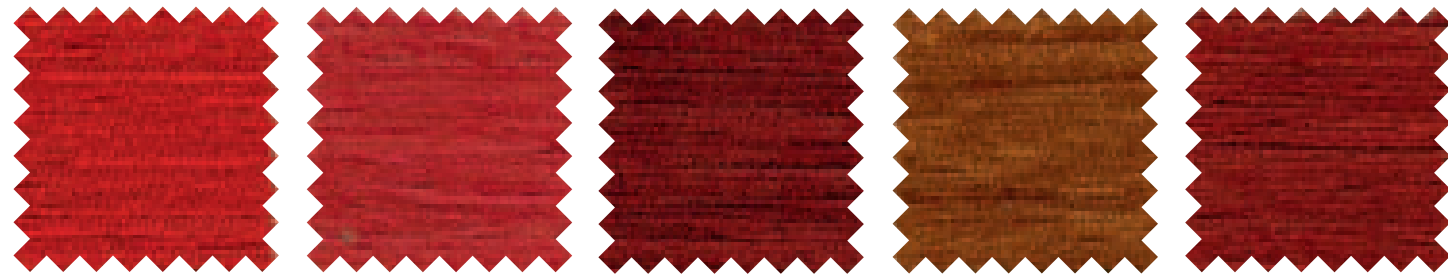


lario 63    lario 56    lario 134    lario 27

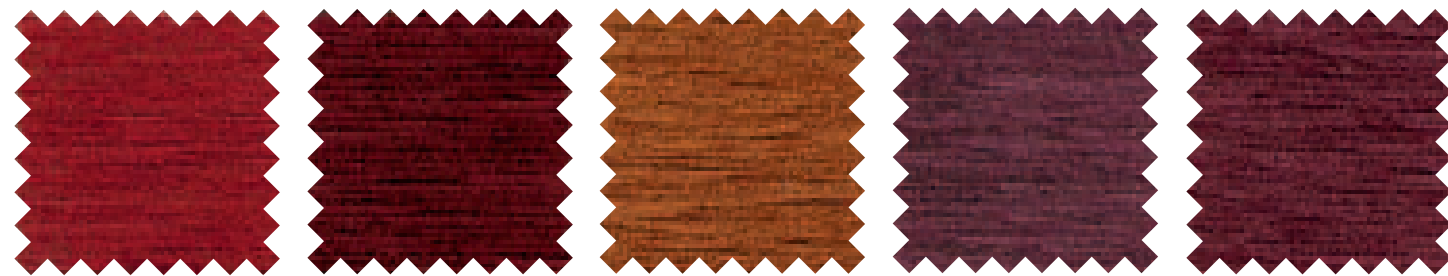
fabric group 2 lario by Grites



lario 109    lario 108    lario 115    lario 111    lario 110



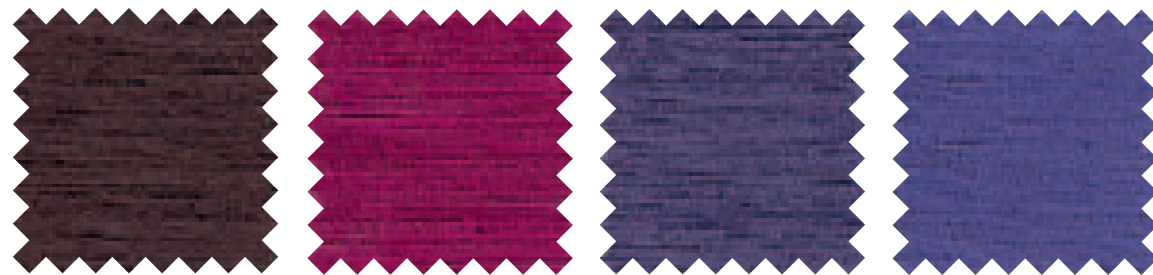
lario 116    lario 123    lario 118    lario 106    lario 121



lario 119    lario 52    lario 107    lario 49    lario 51



lario 50    lario 28    lario 44    lario 45    lario 46

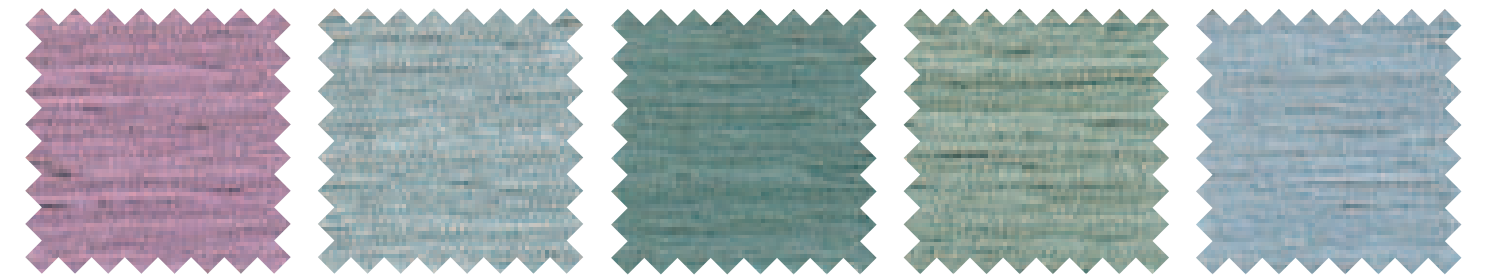


lario 34    lario 48    lario 128    lario 136

fabric group 2 lario by Grites



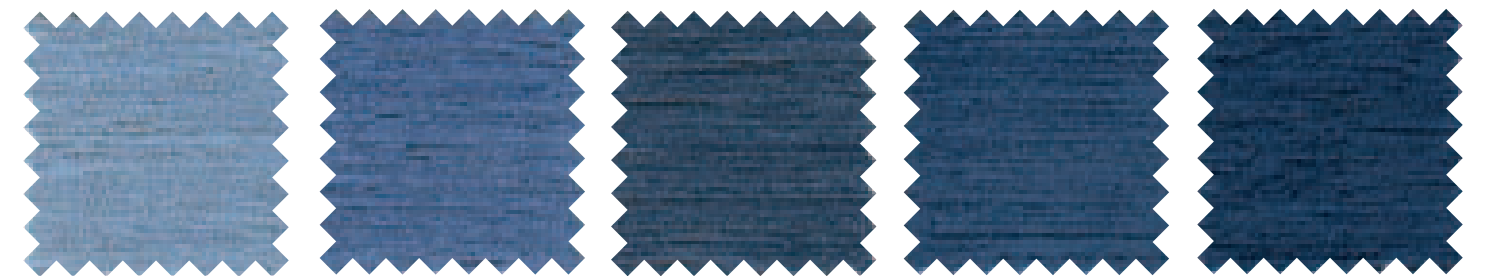
lario 129    lario 133    lario 135    lario 43    lario 126



lario 125    lario 81    lario 74    lario 75    lario 80



lario 76    lario 77    lario 40    lario 137    lario 89



lario 79    lario 84    lario 88    lario 86    lario 91



lario 35    lario 140    lario 139    lario 143

fabric group 7 comfort by Gabriel



comfort 60005



comfort 60002



comfort 1161



comfort 60003



comfort 1012



comfort 66005



comfort 0049



comfort 0050



comfort 8384



comfort 61002



comfort 61003



comfort 60004



comfort 9047



comfort 0004



comfort 0010



comfort 0001



comfort 280



comfort 0005



comfort 1566

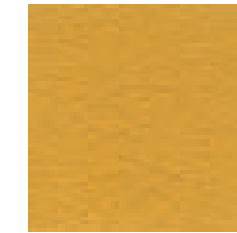
fabric group 7 comfort by Gabriel



comfort 62001



comfort 62003



comfort 0002



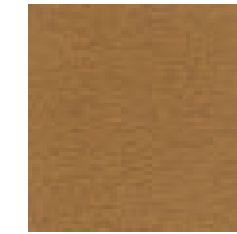
comfort 0007



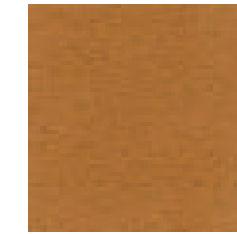
comfort 9083



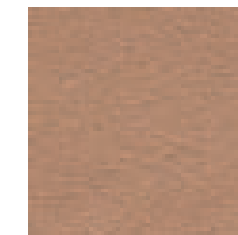
comfort 61009



comfort 9084



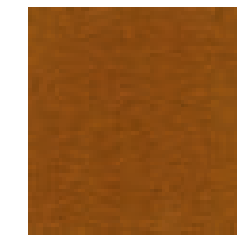
comfort 9070



comfort 1184



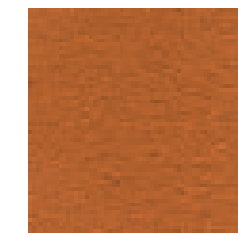
comfort 0051



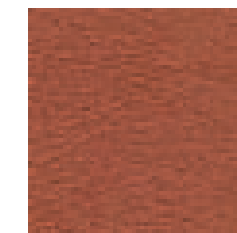
comfort 0006



comfort 0003



comfort 1134



comfort 9043



comfort 61006



comfort 63001



comfort 9055

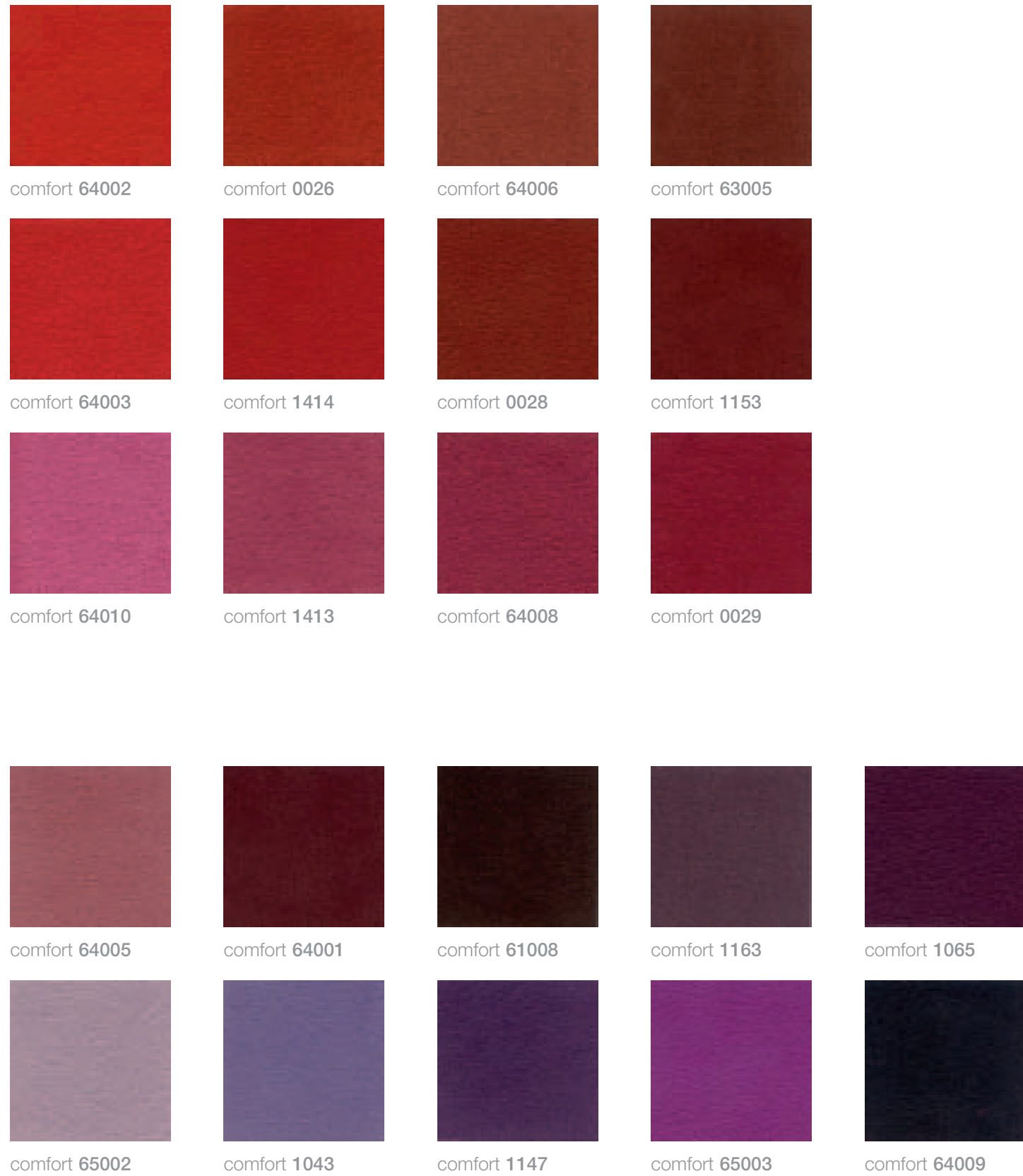


comfort 61004



comfort 0009

fabric group 7 comfort by Gabriel



fabric group 7 comfort by Gabriel



fabric group 7 comfort by Gabriel



fabric group 7/F Soave leather





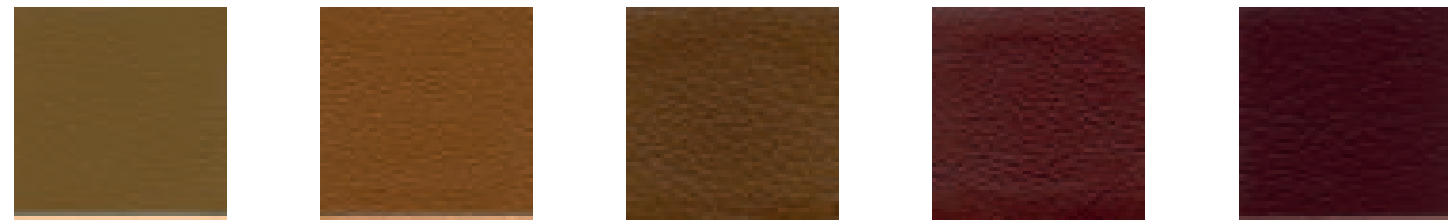
fabric group 9/N nuvola by Penelopeoggi leather



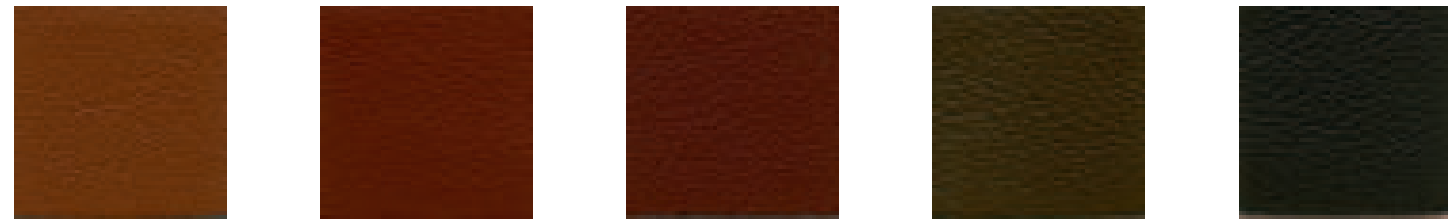
fabric group 9/N nuvola by Penelopeoggi leather



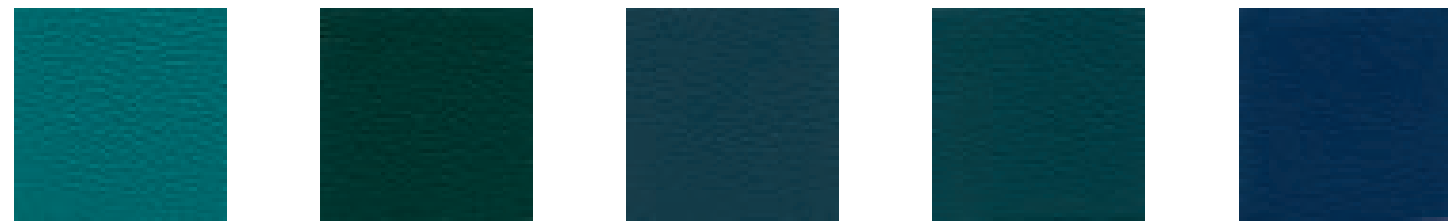
fabric group 9/N nuvola by Penelopeoggi leather



nuvola 190    nuvola 131    nuvola 140    nuvola 108    nuvola 107



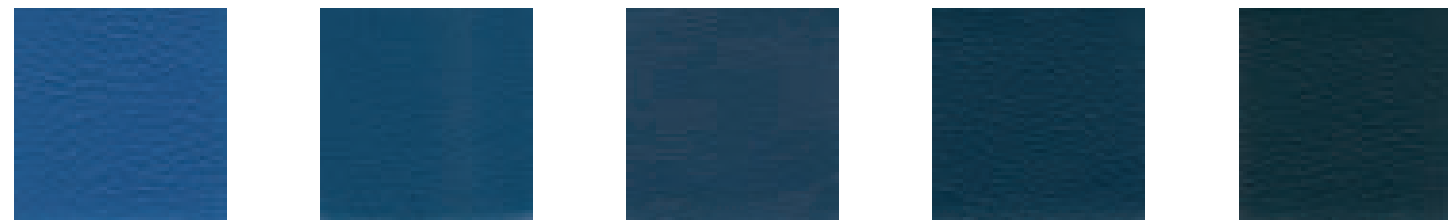
nuvola 137    nuvola 189    nuvola 139    nuvola 175    nuvola 147



nuvola 196    nuvola 128    nuvola 164    nuvola 162    nuvola 105

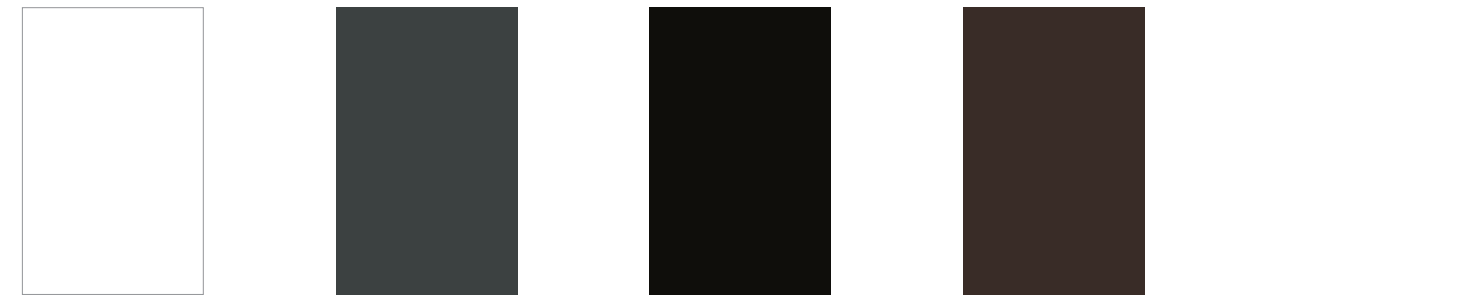


nuvola 146    nuvola 120    nuvola 112    nuvola 141    nuvola 101

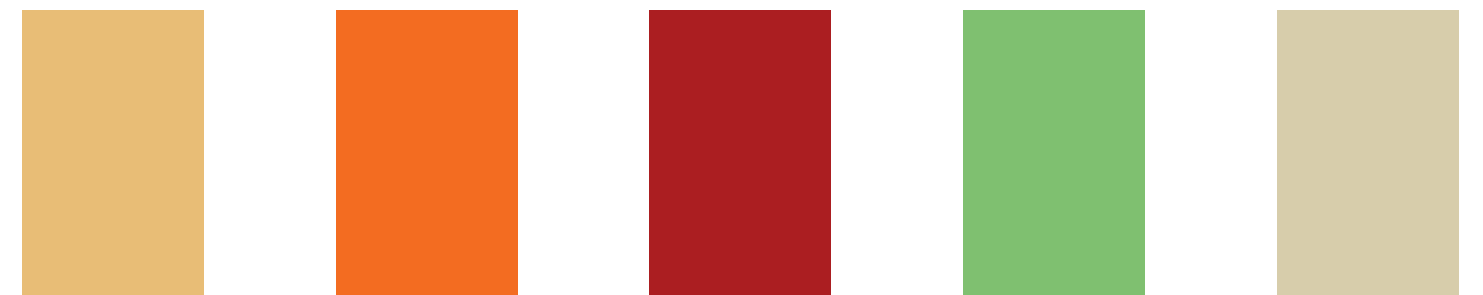


nuvola 145    nuvola 177    nuvola 104    nuvola 154    nuvola 103

fabric group 7/F/C cuoio / hide



C88    C82    C80    C84



C91    C87    C85    C89    C86

freeform®



X01    X02    X03



X07    X06    X04    X05

## wood finishes



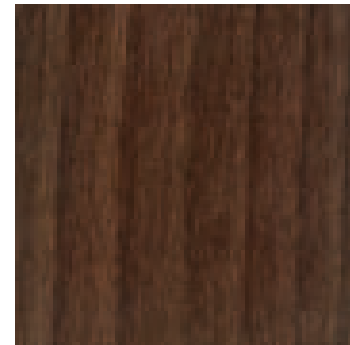
A 1.101



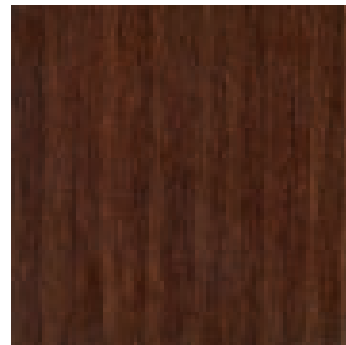
A 1.141



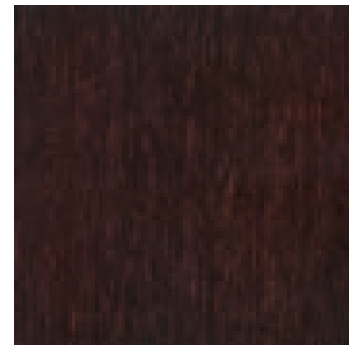
A 1.138



A 1.139



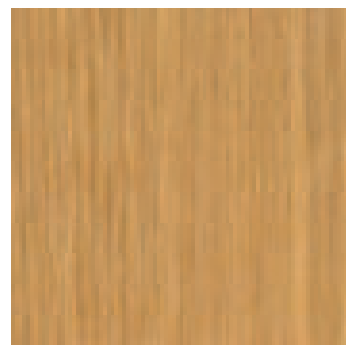
A 1.134



A 1.144



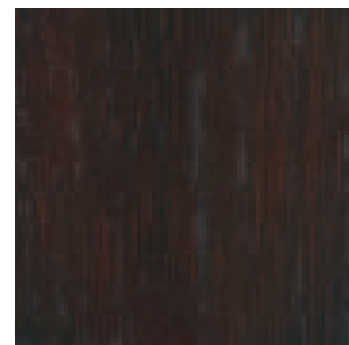
A 1.111



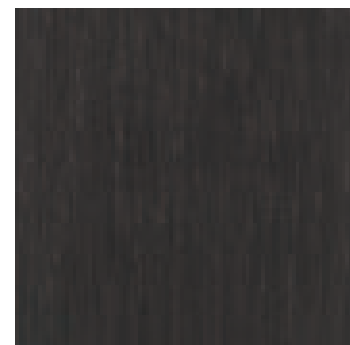
R 3.011



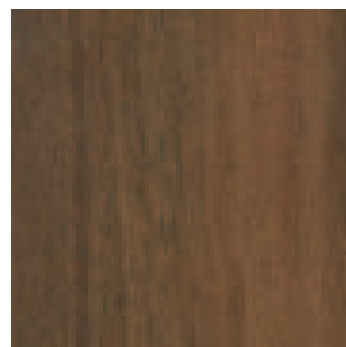
R 3.102



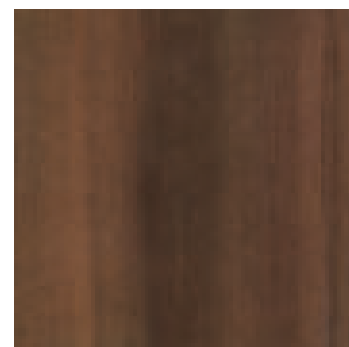
R 3.144



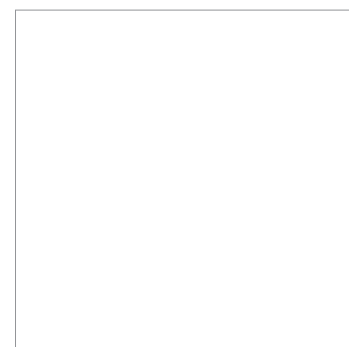
R 3.145



N 7.147



NC 8.146



A 1.333 matt lacquered



A 1.337 matt lacquered

## fabrics

| Tessuto<br>Fabric<br>Tissu<br>Stoff | Composizione<br>Composition<br>Composition<br>Zusammensetzung                | Peso<br>Weight<br>Poids<br>Gewicht | Altezza<br>Widht<br>Hauteur<br>Breite<br>gr/mtl | Abrasione<br>Abrasion test<br>Abrasion<br>Scheuertest<br>Martindale | Solidità luce<br>Light solidity<br>Solidité lumière<br>Lichtechtheit<br>Min. | Lavaggio<br>Washing<br>Lavage<br>Pflegeanleitung |
|-------------------------------------|--|------------------------------------|---|---|--|--|
| 20A                                 | 50% cotton / 50 % polyester  | 370                                | 140   | 21.000  | 4/5  | (P) X ⊗ ☐  |
| 471                                 | 100% polyester   | 450                                | 140   | 50.000  | 4  | (P) X ⊗ ☐  |
| 472                                 | 100% polyester   | 450                                | 140   | 50.000  | 4  | (P) X ⊗ ☐  |
| 48A                                 | 26% polyester / 45% acrilic / 29% cotton                                     | 730                                | 140   | 20.000  | 4/5  | (P) X ⊗ ☐  |
| 494                                 | 100% polyester   | 450                                | 140   | 50.000  | 4  | (P) X ⊗ ☐  |
| 495                                 | 100% polyester   | 450                                | 140   | 50.000  | 4  | (P) X ⊗ ☐  |
| 61A                                 | 30% cotton / 30% polyester /<br>28% cotton-chenille / 12% polyester-chenille | 770                                | 140   | 25.000  | 4/5  | (P) X ⊗ ☐  |
| 61D                                 | 45% cotton-chenille / 30% polyester /<br>25% cotton                          | 714                                | 140   | 50.000  | 4/5  | (P) X ⊗ ☐  |
| 63A                                 | 100% trevira CS (polyester)  | 580                                | 140   | 45.000  | 5  | (1) (P) X ⊗ ☐                                    |
| 63B                                 | 100% trevira CS (polyester)  | 580                                | 140   | 45.000  | 5  | (2) (P) X ⊗ ☐                                    |
| 689                                 | 92% wool / 8% polyamide  | 600                                | 140   | 60.000  | 5/6  | (P) X ⊗ ☐  |
| 69B                                 | 55% acrilic / 24% polyester / 21% viscose                                    | 730                                | 140   | 12.000  | 4/5  | (P) X ⊗ ☐  |
| 69C                                 | 55% acrilic / 24% polyester / 21% viscose                                    | 730                                | 140   | 12.000  | 4/5  | (P) X ⊗ ☐  |
| 69N                                 | 55% acrilic / 24% polyester / 21% viscose                                    | 730                                | 140   | 12.000  | 4/5  | (P) X ⊗ ☐  |
| 776                                 | 96% new wool / 4% nylon  | 560                                | 140   | 45.000  | 5/7  | (3) (P) X ⊗ ☐                                    |
| 777                                 | 96% new wool / 4% nylon  | 560                                | 140   | 45.000  | 5/7  | (4) (P) X ⊗ ☐                                    |
| 990                                 | 96% new wool /4% nylon   | 560                                | 140   | 35.000  | 5/7  | (5) (P) X ⊗ ☐                                    |
| 994                                 | 96% new wool /4% nylon   | 560                                | 140   | 35.000  | 6/7  | (6) (P) X ⊗ ☐                                    |
| 995                                 | 96% new wool /4% nylon   | 560                                | 140   | 35.000  | 5/7  | (7) (P) X ⊗ ☐                                    |


### Omologazioni Approvals Homologations Zulassungen





- (1) BS 5852 ig.s.2-5/EN 1021 1-2/IMO A. 652(16)/NF P 92 503 M1/ ÖNORM B1/Q1/ Cal.Tec.Bull 117/CSE RF 1-75-A/CLASSE 1/DIN 4102/B1
- (2) BS 5852 ig.s.2-5/EN 1021 1-2/IMO A. 652(16)/NF P 92 503 M1/ ÖNORM B1/Q1/ Cal.Tec.Bull 117/CSE RF 1-75-A/CLASSE 1/DIN 4102/B1
- (3) BS 5852 ig.s. 2-4/Cal.Tec.Bull. 117/DIN 4102 B2/EN 1021-1-2/ IMO A. 652(16)/UNI 9175/UNI 9176/1IM/ÖNORM B1/Q1
- (4) BS 5852 ig.s. 2-4/Cal.Tec.Bull. 117/DIN 4102 B2/EN 1021-1-2/ IMO A. 652(16)/UNI 9175/UNI 9176/1IM/ÖNORM B1/Q1

- (5) BS 5852 ig.s. 2-4/Cal.Tec.Bull. 117/DIN 4102 B2/EN 1021-1-2/ IMO A. 652(16)/UNI 9175/UNI 9176/1IM/ÖNORM B1/Q1
- (6) BS 5852 ig.s. 2-4/Cal.Tec.Bull. 117/DIN 4102 B2/EN 1021-1-2/IMO A. 652(16)/UNI 9175/UNI 9176/1IM/ÖNORM B1/Q1
- (7) BS 5852 ig.s. 2-4/Cal.Tec.Bull. 117/DIN 4102 B2/EN 1021-1-2/IMO A. 652(16)/UNI 9175/UNI 9176/1IM/ÖNORM B1/Q1






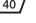
- X non candeggiare / do not bleach / ne pas blanchir / nicht bleichen
- ☐ stiro delicato / iron on low temperature / repasser à température basse / bügeln mit leichter Einstellung
- ☐ stiro medio / iron on medium temperature / repasser à température moyenne / bügeln mit mittlerer Einstellung
- (P) lavaggio a secco / dry cleaning / nettoyage à sec / chemische Reinigung
- ⊗ non asciugabile a macchina / do not machine-dry / ne pas sécher à machine / nicht Trockner geeignet







## fabric group 2 lario by Grites

| Composizione<br>Composition<br>Composition<br>Zusammensetzung | Peso<br>Weight<br>Poids<br>Gewicht<br>gr/mtl | Altezza<br>Widht<br>Hauteur<br>Breite<br>cm | Abrasione<br>Abrasion test<br>Abrasion<br>Scheuertest<br>Martindale | Solidità luce<br>Light solidity<br>Solidité lumière<br>Lichtechtheit<br>Min. | Lavaggio<br>Washing<br>Lavage<br>Pflegeanleitung  |
|---|--|---|---|--|---|
| 45% cotton / 15% polyester / 40% viscose                      | 680  | 140   | 25.000  | 5  |     |

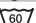




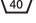
-  non candeggiare / do not bleach / ne pas blanchir / nicht bleichen
-  stiro delicato / iron on low temperature / repasser à température basse / bügeln mit leichter Einstellung
-  lavaggio a secco / dry cleaning / nettoyage à sec / chemische Reinigung
-  non asciugabile a macchina / do not machine-dry / ne pas sécher à machine / nicht Trockner geeignet

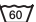



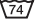

## fabric group 7 comfort by Gabriel

| UK  |  |
|---|--|
| Fields of application   | (BS 2543) contract   |
| Composition   | 88% Polyester / 12% Polyurethane   |
| Weight  | approx. grams lin. metre 385   |
| Width   | cm 140   |
| Abrasion resistance   | rubs Martindale (ISO 12947-2) 100.000  |
| Colour fastness   | Scale 1-8, max. 8 - EN ISO 105-B02 5   |
| Colour fastness to rubbing  | Scale 1-5, max. 5 - wet/dry - EN ISO105x12 4-5/4-5   |
| Pilling   | Scale 1-5, max. 5 - EN ISO 12945-2 5   |
| Permeability to air   | l/(m2xs) - EN ISO 9237 78,44   |
| Water vapour permeability   | mg/(cm2xh) - DIN 53333 26,5  |
| Flammability  | EN 1021-1 • BS 5852 P.1 source 0. • Calif. Bull. 117 Sec. E.<br>Can be fireproof treated to pass among others:<br>BS 5852 P1 source 0&1 • BS 5852 P. 2 crib 5 • EN 1021-1&2 • DIN 4102-B1/B2 • IMO Ress. A652 (16) (IMO FTFC P8) • IMO Ress. A653 (16) + IMO Ress. MSC 61 (67) P5 (IMO FTFC P2, P5 and Annex 2) • FAR 25-853 (b+d) • NFP 92503:M1.   |
| NB:   | Flame retardant performance is dependent upon the foam and back coating used.  |
| Cleaning  |     Shrinkage max. 2%<br> BS 5661 Hospital Laundry Procedure<br> when flame retardant back coated. |
| Most stains can be removed by brushing with a suede brush or an eraser. Or use a solution of luke-warm water and a neutral detergent. Spot and Stain Removal Guide is obtainable on request. Subject to changes and colour differences. |  |

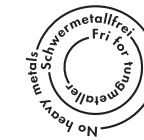
| D  |   |
|--|---|
| Verwendungsbereich   | (BS 2543) Objekt  |
| Material   | 88% Polyester / 12% Polyurethan   |
| Gewicht  | ca. Gramm pro lf. Meter 385   |
| Breite   | cm 140  |
| Scheuerfestigkeit  | Scheuertouren Martindale (ISO 12947-2) 100.000  |
| Lichtechtheit  | Skala 1-8, max. 8 - EN ISO 105-B02 5  |
| Reibechtheit   | Skala 1-5, max. 5 - nass/trocken - EN ISO105x12 4-5/4-5   |
| Pilling  | Skala 1-5, max. 5 - EN ISO 12945-2 5  |
| Luftdurchlässigkeit  | l/(m2xs) - EN ISO 9237 78,44  |
| Wasserdampfdurchlässigkeit   | mg/(cm2xh) - DIN 53333 26,5   |
| Feuersicherung   | EN 1021-1 • BS 5852 P.1 source 0. • Calif. Bull. 117 Sec. E.<br>Kann schwer-entflammbar ausgerüstet werden, besteht dann u.a.:<br>BS 5852 P1 source 0&1 • BS 5852 P. 2 crib 5 • EN 1021-1&2 • DIN 4102-B1/B2 • IMO Ress. A652 (16) (IMO FTFC P8) • IMO Ress. A653 (16) + IMO Ress. MSC 61 (67) P5 (IMO FTFC P2, P5 and Annex 2) • FAR 25-853 (b+d) • NFP 92503:M1.  |
| NB:  | Schwerentflammbarkeit hängt von verwendetem Schaum und verwendeter Rückenbeschichtung ab.   |
| Reinigung  |     Einlaufen max. 2%<br> BS 5661 Hospital Laundry Procedure<br> wenn schwer-entflammbar ausgerüstet. |
| Die meisten Flecken können mit einer weichen Bürste oder mit Radiergummi entfernt werden. Oder durch Verwendung von lauwarmer Lösung aus Feinwaschmittel/Seifenspäne und Wasser. Fleckentfernungstabelle wird auf Anforderung zugeschickt. Unter Vorbehalt von Änderungen und Farbunterschieden. |   |

Die meisten Flecken können mit einer weichen Bürste oder mit Radiergummi entfernt werden. Oder durch Verwendung von lauwarmer Lösung aus Feinwaschmittel/Seifenspäne und Wasser. Fleckentfernungstabelle wird auf Anforderung zugeschickt. Unter Vorbehalt von Änderungen und Farbunterschieden.

| DK   |  |
|--|--|
| Anvendelsesområde  | (BS 2543) contract   |
| Materiale  | 88% Polyester / 12% Polyurethan  |
| Vægt   | ca. g pr. lb. mtr. 385   |
| Bredde   | cm 140   |
| Slidstyrke   | slidbevægelser, Martindale (ISO 12947-2) 100.000   |
| Lysægtthed   | Skala 1-8, max. 8 - EN ISO 105-B02 5   |
| Gnideægtthed   | Skala 1-5, max 5, våd/tør EN ISO 105x12 4-5/4-5  |
| Pilling  | Skala 1-5, max. 5 - EN ISO 12945-2 5   |
| Åndbarhed  | l/(m2xs) - EN ISO 9237 78,44   |
| Fugtoptagessevne   | mg/(cm2xh) - DIN 53333 26,5  |
| Brandsikring   | EN 1021-1 • BS 5852 P.1 source 0. • Calif. Bull. 117 Sec. E.<br>Kan flammesikres og opfylder derefter bl.a.:<br>BS 5852 P1 source 0&1 • BS 5852 P. 2 crib 5 • EN 1021-1&2 • DIN 4102-B1/B2 • IMO Ress. A652 (16) (IMO FTFC P8) • IMO Ress. A653 (16) + IMO Ress. MSC 61 (67) P5 (IMO FTFC P2, P5 and Annex 2) • FAR 25-853 (b+d) • NFP 92503:M1.   |
| NB:  | Flammesikkerheden er afhængig af anvendt skumtype og bagbeklædning.  |
| Rensning   |     Krympning max. 2%<br> BS 5661 Hospital Laundry Procedure<br> når flammesikret med bagbeklædning. |
| De fleste typer pletter kan fjernes ved let børstning med børste eller viskelæder. Eller med lunkent vand tilsat et neutralt vaskemiddel. Pletguide kan rekvireres. Med forbehold for ændringer og farvedifferencer. |  |

| F  |  |
|--|--|
| Application  | (BS 2543) collectivité   |
| Composition  | 88% Polyester / 12% Polyurethan  |
| Poids  | approx. gr. par mètre linéaire 385   |
| Largeur  | cm 140   |
| Résistance à l'usure   | tours Martindale (ISO 12947-2) 100.000   |
| Résistance à la lumière  | échelle 1-8, max. 8 - EN ISO 105-B02 5   |
| Résistance des couleurs au brossage  | échelle 1-5, max. 5 - mouillé/sec - EN ISO 105x12 4-5/4-5  |
| Boulochage   | échelle 1-5, max. 5 - EN ISO 12945-2 5   |
| De matière respirante  | l/(m2xs) - EN ISO 9237 78,44   |
| Perméabilité de la vapeur  | mg/(cm2xh) - DIN 53333 26,5  |
| Inflammabilité   | EN 1021-1 • BS 5852 P.1 source 0. • Calif. Bull. 117 Sec. E.<br>Peut être ignifugé et va conformer à:<br>BS 5852 P1 source 0&1 • BS 5852 P. 2 crib 5 • EN 1021-1&2 • DIN 4102-B1/B2 • IMO Ress. A652 (16) (IMO FTFC P8) • IMO Ress. A653 (16) + IMO Ress. MSC 61 (67) P5 (IMO FTFC P2, P5 and Annex 2) • FAR 25-853 (b+d) • NFP 92503:M1.  |
| NB:  | Inflammabilité dépend de la mousse et enduction d'envers utilisés.   |
| Nettoyage  |     Rétrécissement max 2%<br> BS 5661 Hospital Laundry Procedure<br> Peut être lavé à 40°C avec traitement au feu. |
| La plupart des tâches peuvent être enlevées avec une brosse ou une gomme. Sinon avec de l'eau tiède contenant une lessive neutre. Un guide anti-tache vous sera adressé à la demande. Réserve faite des changements et différence de couleurs. |  |

La plupart des tâches peuvent être enlevées avec une brosse ou une gomme. Sinon avec de l'eau tiède contenant une lessive neutre. Un guide anti-tache vous sera adressé à la demande. Réserve faite des changements et différence de couleurs.



## fabric group 7/F Soave leather

| Dati Tecnici<br>Technical Data   |                                    | Spessore: 0,9/1<br>Thickness: 0,9/1 |                           |   |  |
|--|------------------------------------|-------------------------------------|---------------------------|---|--|
| Origine Animale<br>Origin  | Provenienza<br>Place of Origin     | Tipo di Concia<br>Tanning           | Tipo di Tintura<br>Dyeing | Tipo di finizione<br>Finishing  | Tipologia<br>Typology  |
| Bovine<br>Rind   | EU/Extraeuropea<br>EU/Extraeuropea | Ai Sali di Cromo<br>Chromium salts  | All'anilina<br>Aniline    | Pigmenti all'acqua<br>Water-based pigments                            | Mezzo Fiore su<br>Bovine stampa liscia<br>Half grain on Bovine<br>printed smooth |
| Test Fisici<br>Physical Test   |                                    | Rif. Norma Standard<br>Reference    |                           | Valori<br>Limits  |  |
| Solidità del colore alla Luce Artificiale<br>Light Fastness xenon lamp |                                    | I.U.F. 402                          |                           | Valore > 4 scala dei blu<br>Value > 4 Blue scale                      |  |
| Resistenza alla lacerazione<br>Tear strenght                           |                                    | DIN 53329 - a                       |                           | > 15 N/mm   |  |
| Resistenza alla trazione<br>Tensile strenght                           |                                    | I.U.P. 6                            |                           | > 10 N/mmq  |  |
| Sfregamento a secco<br>Dry friction                                    |                                    | I.U.F. 450                          |                           | 1000 cicli valore 5 scala dei grigi<br>1000 cycles value 5 grey scale |  |
| Sfregamento a umido<br>Damp friction                                   |                                    | I.U.F. 450                          |                           | 300 cicli valore 5 scala dei grigi<br>300 cycles value 5 grey scale   |  |
| Solidità della pelle alla flessione ripetuta<br>Flex crack resistance  |                                    | I.U.P. 20                           |                           | 20.000  |  |
| Adesività dello strato di rifinizione<br>Adhesion of finish            |                                    | I.U.F. 470                          |                           | > 9 N/cm  |  |

Soave è una pelle con fi ore corretto, proveniente da bovini di origine Europea ed Extraeuropea.

L'aspetto liscio e la morbidezza rendono questa pelle una scelta ideale per le più diverse tipologie di utilizzo.

Il procedimento di tintura è all'Anilina. La superficie di ciascuna pelle è di circa 4/5 m<sup>2</sup>, lo spessore è di 0.9 - 1.0 mm. I prodotti chimici necessari alla produzione della pelle utilizzati per la concia, la tintura e la rifinizione dei grezzi, non contengono sostanze nocive alla salute ed all'ambiente. Per motivi tecnici non è possibile garantire la stessa tonalità del colore tra una partita e l'altra.

Soave is a corrected flower leather coming from European and extra-European cattle.

The smooth aspect, the delicate and falling touch provide this leather with the ideal qualities for the most various using typologies.

The hides are dyed with aniline process. The surface of each hide is roughly 4/5 m<sup>2</sup>, the thickness is 0.9 - 1.0 mm. The chemicals needed for the production of leather, used for the tanning, the dyeing and the finishing of the raw hides, do not contain substances which can be harmful for health or the environment. Due to technical reasons it is not possible to guarantee the same tonality of colour from one bath to another.

Soave Leder hat eine korregierte Narbung und stammt von Rindern europäischer sowie außereuropäischer Herkunft.

Das glatte Aussehen, der weiche und angenehme Griff machen dieses Leder die ideale Wahl für die verschiedensten Anwendungen.

Anilinfärbung. Die Größe einer Haut beträgt ca. 4/5 m<sup>2</sup>, die Dicke 0.9 - 1.0 mm. Die für die Herstellung des Leders notwendigen chemischen Produkte, die bei der Gerbung, der Färbung und der Endbearbeitung der Rohleders verwendet werden, enthalten keine umwelt- und gesundheitsschädlichen Stoffe. Aus technischen Gründen können wir bei verschiedenen Partien einen identischen Farbton nicht gewährleisten.

## fabric group 9/N nuvola by Penelopeoggi leather

| Caratteristiche fisiche<br>Physical datasheet |                                   | Caratteristiche tecniche<br>Technical datasheet     |  |
|---|-----------------------------------|---|--|
| Tipo pellame<br>Hide type                     | Bovino europeo<br>European bovine | Sfregamenti a secco<br>Dry friction (IUF 450)       | 1.000 cicli<br>1,000 cycles                        |
| Concia<br>Tanning                             | Al cromo<br>Chrome                | Sfregamenti a umido<br>Damp friction (IUF 450)      | 250 cicli<br>250 cycles                            |
| Tintura<br>Dyeing                             | Passante<br>Penetrating           | Resistenza al fuoco<br>Fire resistance (BS 5852/1)  | Nessuna combustione<br>No ignition                 |
| Rifinizione<br>Finishing                      | Poliuretana<br>Polyurethane       | Ancoraggio rifinizione<br>Finish locking (IUF 470)  | = 3,0 N/cm <sup>2</sup><br>= 3.0 N/cm <sup>2</sup> |
| Superficie<br>Surface                         | Fiore liscio<br>Smooth grain      | Fatica a flessione<br>Cracking fatigue (IUP 20)     | > 50.000 cicli<br>> 50,000 cycles                  |
| Spessore<br>Thickness                         | mm 1,0 - 1,2<br>mm 1.0 - 1.2      | Solidità alla luce<br>Solidity in light (IUF 402)   | = 4 scala dei grigi<br>= 4 gray scale              |
| Taglia media<br>Average size                  | > mq 5,0<br>> sqm 5.0             | Invecchiamento da calore<br>Ageing by heat (IUP 35) | = 4 scala dei grigi<br>= 4 gray scale              |

I prodotti chimici necessari alla produzione della pelle, utilizzati per la concia, la tintura e la rifinizione dei grezzi, non contengono sostanze nocive alla salute ed all'ambiente.

Per motivi tecnici non è possibile garantire la stessa tonalità del colore tra una partita e l'altra.

The chemicals needed for the production of leather, used for the tanning, the dyeing and the finishing of the raw hides, do not contain substances which can be harmful for health or the environment.

Due to technical reasons it is not possible to guarantee the same tonality of colour from one bath to another.

Die für die Herstellung des Leders notwendigen chemischen Produkte, die bei der Gerbung, der Färbung und der Endbearbeitung des Rohleders verwendet werden, enthalten keine umwelt- und gesundheitsschädlichen Stoffe.

Aus technischen Gründen können wir bei verschiedenen Partien einen identischen Farbton nicht gewährleisten.

Les produits chimiques nécessaires à la fabrication du cuir, utilisés pour le tannage, la teinture et la finition des peaux brutes ne contiennent pas de substances nocives pour la santé et l'environnement.

Pour des raisons techniques, il nous est impossible de garantir la même tonalité de couleur d'un lot à l'autre.

## wood finishes

### Attenzione informazione importante

Il legno è un materiale naturale, non sintetico. Ogni tronco si diversifica dall'alto per colore e struttura. Differenze di tonalità o di grado di lucentezza tra i campioni della nostra collezione e la merce fornita non costituiscono alcun motivo di reclamo.

### Attention important information

Natural wood is not a synthetic material. Each timber has a different colour and structure. Slightly differences in colour and brillancy between the samples of our wood-collection and manufacturing is no reason for a claim.

### Attention information importante

Le bois naturel n'est pas un matériel synthétique. Chaque tronc change de couleur et de structure. Nous ne pouvons pas accepter des réclamations pour des différences de couleur ou de brillant dans les échantillons de notre collection.

### Achtung wichtige Information

Natürlich gewachsenes Holz ist kein synthetischer Werkstoff. Jeder Stamm fällt in der Farbe und Struktur anders aus. Abweichungen in Farbton oder Glanzgrad der Muster unserer Holzkollektion sind aber kein Reklamationsgrund!

**A 1.101** Faggio tinto naturale / Beech natural stain / Hêtre teinté naturel / Buche natur gebeizt

**A 1.111** Faggio tinto nero / Beech black stain / Hêtre teinté noir / Buche schwarz gebeizt

**A 1.134** Faggio tinto wengé / Beech wengé stain / Hêtre teinté wengé / Buche, Wengé gebeizt

**A 1.138** Faggio tinto ciliegio antico / Beech antique cherry stain / Hêtre teinté cerisier antique / Buche, Kirschbaum antik gebeizt

**A 1.139** Faggio tinto noce americano / Beech american walnut stain / Hêtre teinté noyer américain / Buche, amerikanischer Nussbaum gebeizt

**A 1.141** Faggio tinto ciliegio naturale / Beech natural cherry stain / Hêtre teinté cerisier naturel / Buche, Kirschbaum natur gebeizt

**A 1.144** Faggio tinto wengé scuro / Beech wengé dark stain / Hêtre teinté wengé foncé / Buche, Wengé dunkel gebeizt

**R 3.011** Rovere massello oleato / Solid oak oiled / Chêne massif huilé / Eiche massiv, geölt

**R 3.102** Rovere chiaro / Oak light stain / Chêne teinté clair / Eiche hell gebeizt

**R 3.144** Rovere tinto wengé scuro / Dark oak wengé stain / Chêne teinté wengé foncé / Eiche, Wengé dunkel gebeizt

**R 3.145** Rovere grigio / Grey oak / Chêne gris / Eiche grau

**N 7.147** Noce italiano 07 / Italian walnut 07 / Noyer italien 07 / Italienischer Nussbaum 07

**NC 8.146** Noce canaletto 07 / Black walnut stain 07 / Noyer noir 07 / Amerikanischer Nussbaum 07

**A 1.333** Laccato bianco opaco / White matt lacquered / Laqué blanc satiné / Weiss matt lackiert

**A 1.337** Laccato nero opaco / Black matt lacquered / Laqué noir satiné / Schwarz matt lackiert

**A 1.452** Laccato bianco brillante / White highgloss lacquered / Laqué blanc brillant / Weiss Hochglanz lackiert

**A 1.460** Laccato nero brillante / Black highgloss lacquered / Laqué noir brillant / Schwarz Hochglanz lackiert

## freeform®

**Freeform®:** un materiale schiumato a bassa densità che dona una piacevole sensazione di morbidezza al tatto. Questo materiale ha proprietà antigraffio ed è caratterizzato da una naturale elasticità e da elevata resistenza.

**Freeform®:** this new low-density integral material gives the product a soft and nice touch sensation. Freeform has a high resistance thanks to its natural elasticity. It is also scratch proof.

**Freeform®:** ein Material aus weichem Integraformschaum mit niedriger Dichte. Kennzeichnend für das Material ist seine hohe Widerstandsfähigkeit gegen Kratzer und seine natürliche Elastizität.

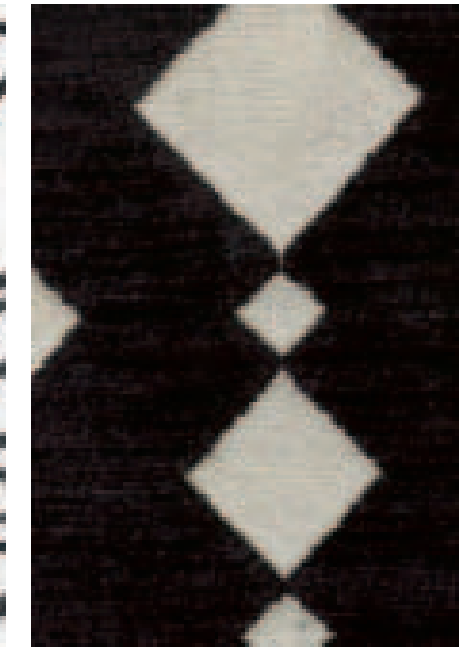
**Freeform®:** un nouveau matériau intégral à basse densité qui donne une sensation agréable de douceur au toucher. Ce matériau a une propriété anti-griffure et est caractérisé par une élasticité naturelle et une résistance élevée.



994



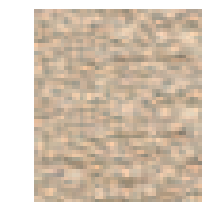
472



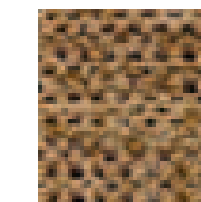
69C



20A



63A



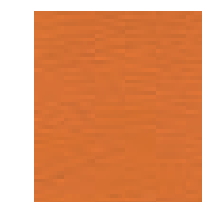
61D



lario 15



soave 209



nuvola 149



hide C84



comfort 61002



freeform X04

Attenzione: nonostante l'utilizzo di elevata tecnologia di stampa, la fedeltà di riproduzione di stoffe e colori non può essere garantita al 100% .  
Attention: although we used high quality printing technology, please remember that a 100% reproduction of fabrics and colours cannot be guaranteed.  
Achtung: Wir haben versucht die gedruckten Stoff- und Farbmuster möglichst genau an die Originalfarben anzupassen, eine 100%ige Übereinstimmung kann jedoch aus drucktechnischen Gründen nicht garantiert werden.  
Attention: malgré l'utilisation d'une impression de haute qualité, la fidélité de reproduction des tissus et coloris ne peut être garantie à 100%.



**Tonon & C. spa**

33044 Manzano - Italy - Via Diaz, 22

Tel. +39 0432 740740 Fax +39 0432 740770

[www.tononitalia.com](http://www.tononitalia.com) e-mail: [tonon@tononitalia.it](mailto:tonon@tononitalia.it)